

# A Guide for Making a Genogram

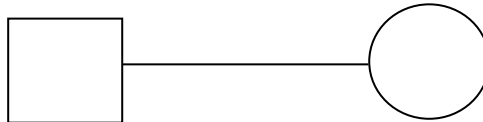
- Keep it simple
- **Include DOB's**
- Notes can be made regarding specifics when necessary but the objective is to reflect the significant relationship(s) to a client
- The oldest child is placed on the far left (youngest on the far right)

## Key

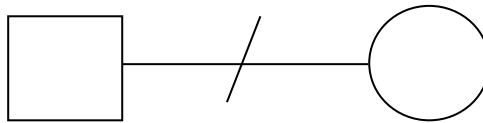


## Relationships

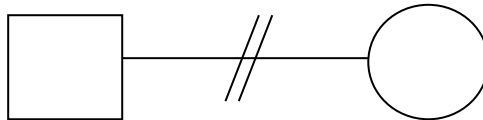
Partner



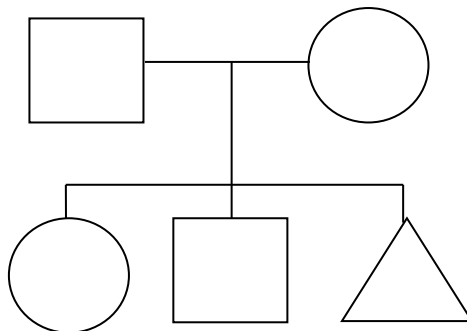
Separated



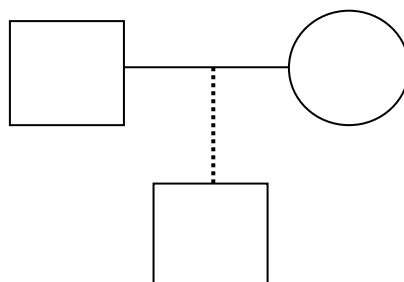
Divorced



## Children; Biological

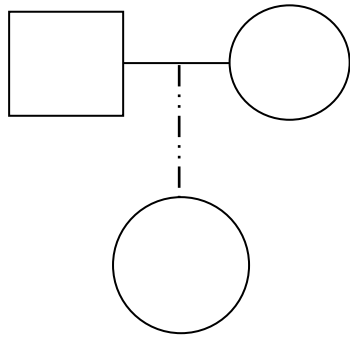


Adopted

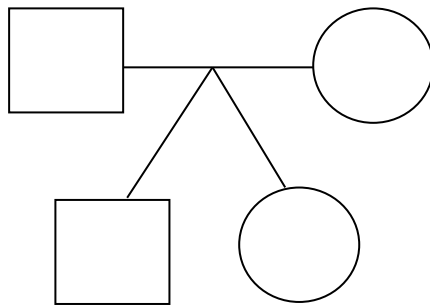


# A Guide for Making a Genogram

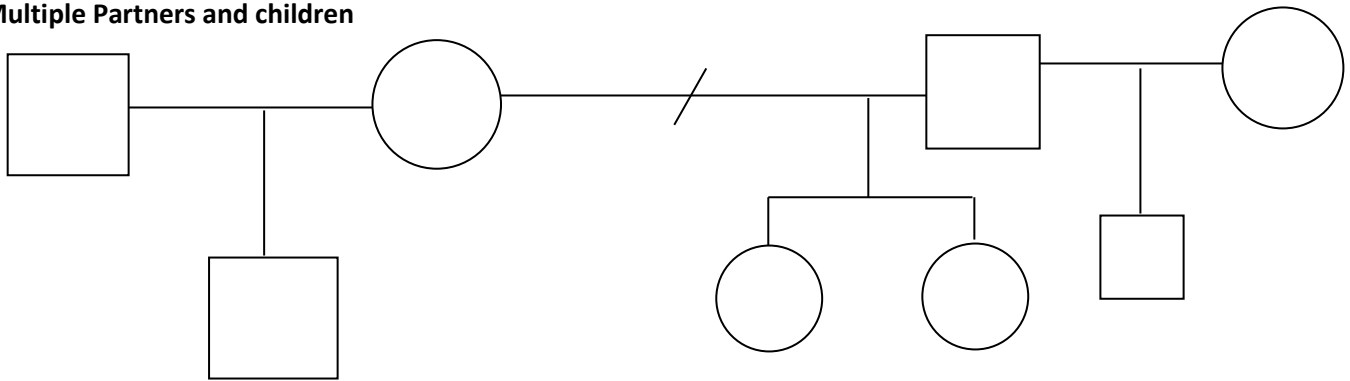
**Fostered**



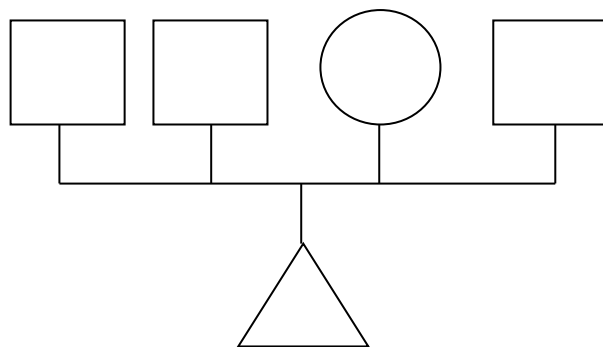
**Twins**



**Multiple Partners and children**

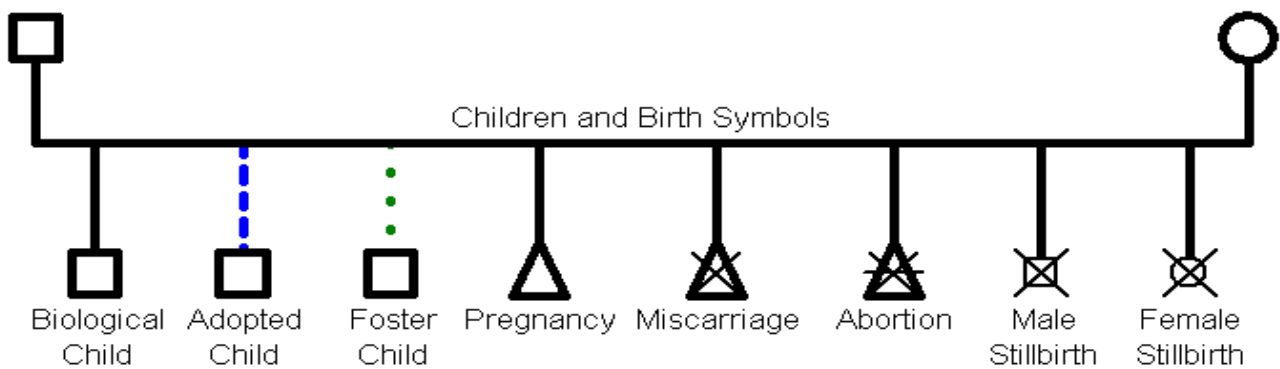
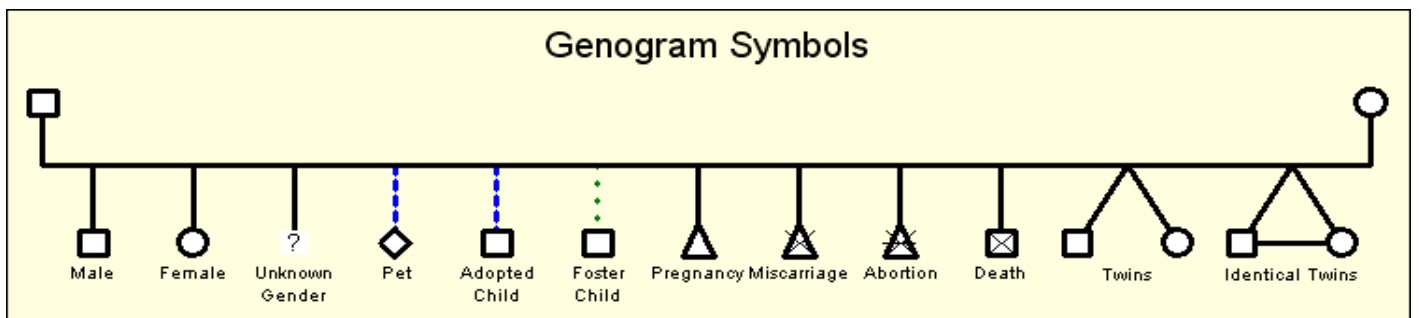
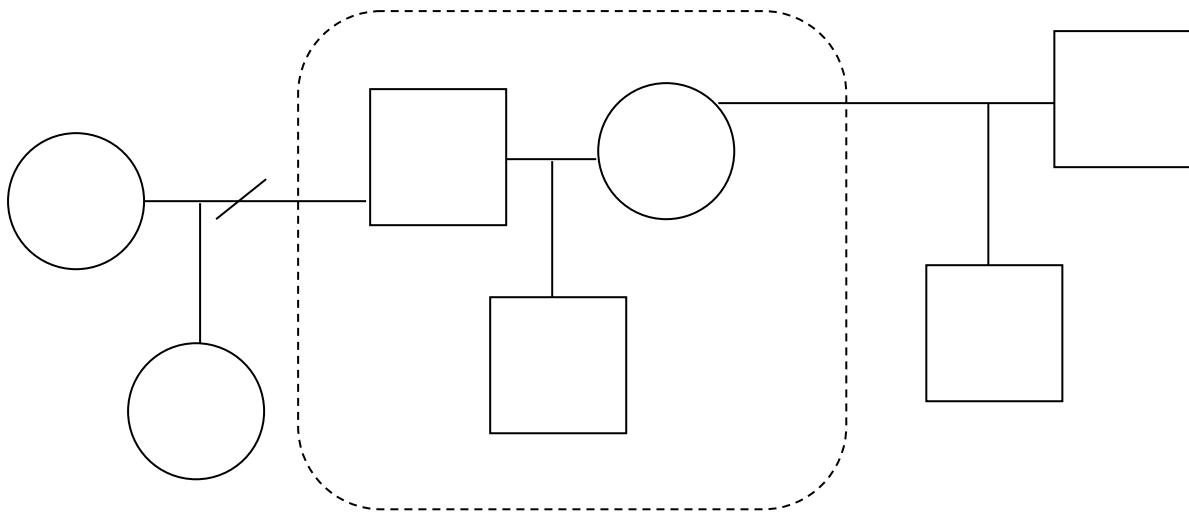


**Ambiguity of paternity**

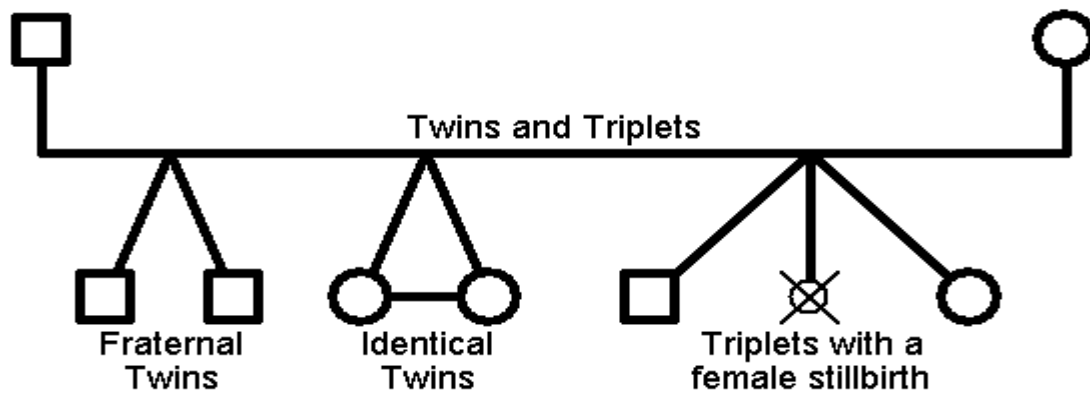


# A Guide for Making a Genogram

Indicator that Family members are in the same household



# A Guide for Making a Genogram



Gay/Lesbian      Bisexual



Transgender People



Man to woman



Woman to man