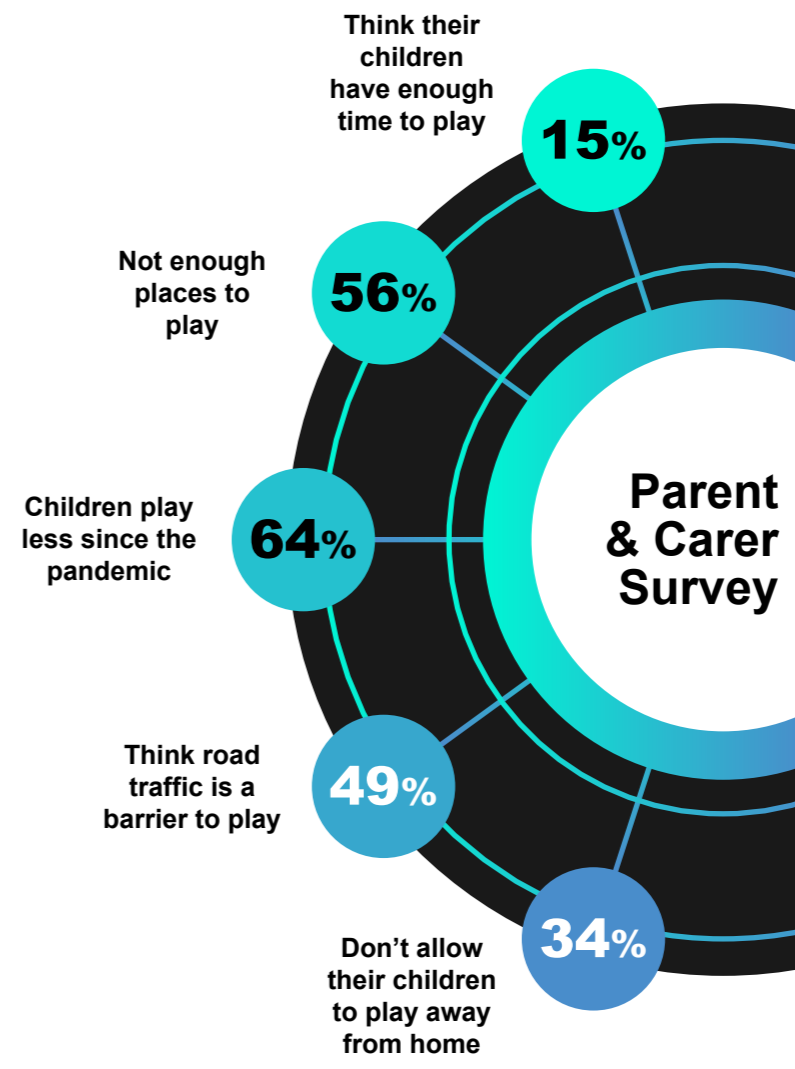
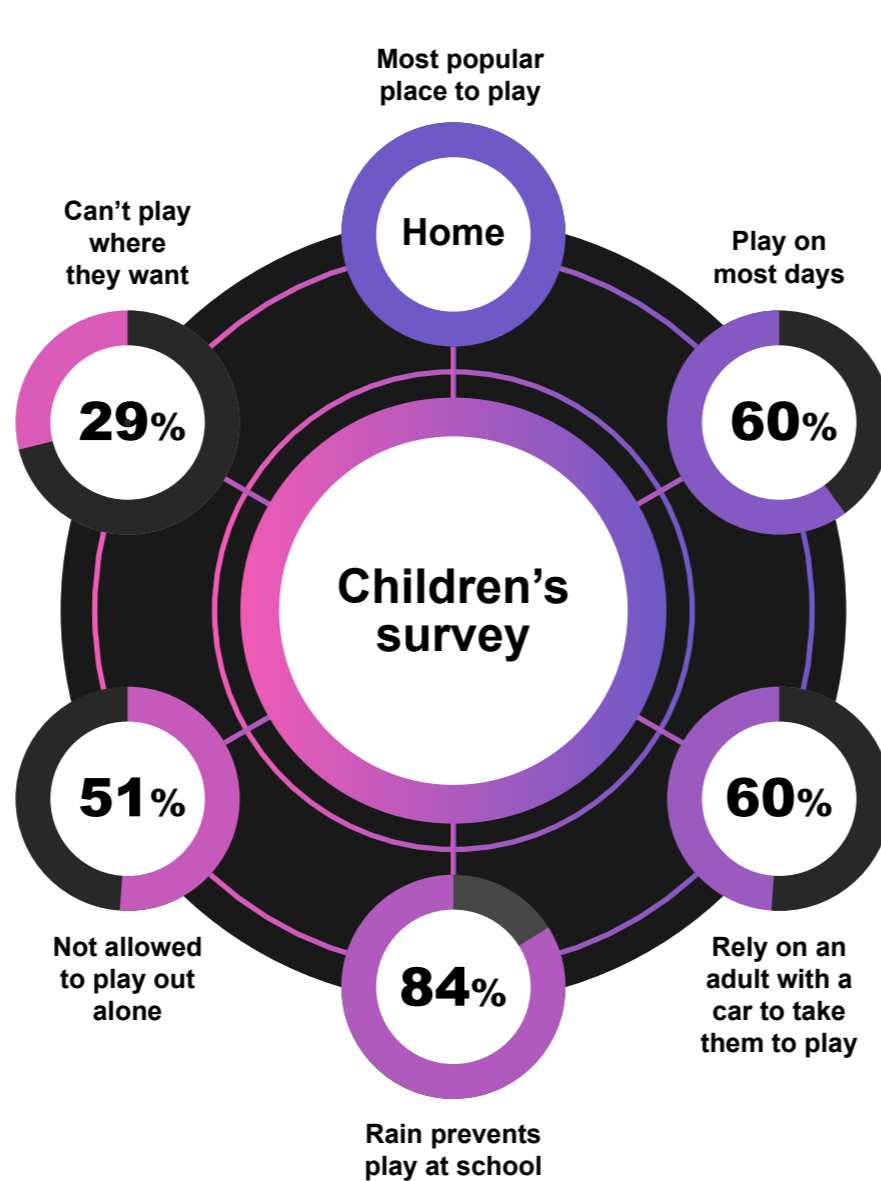
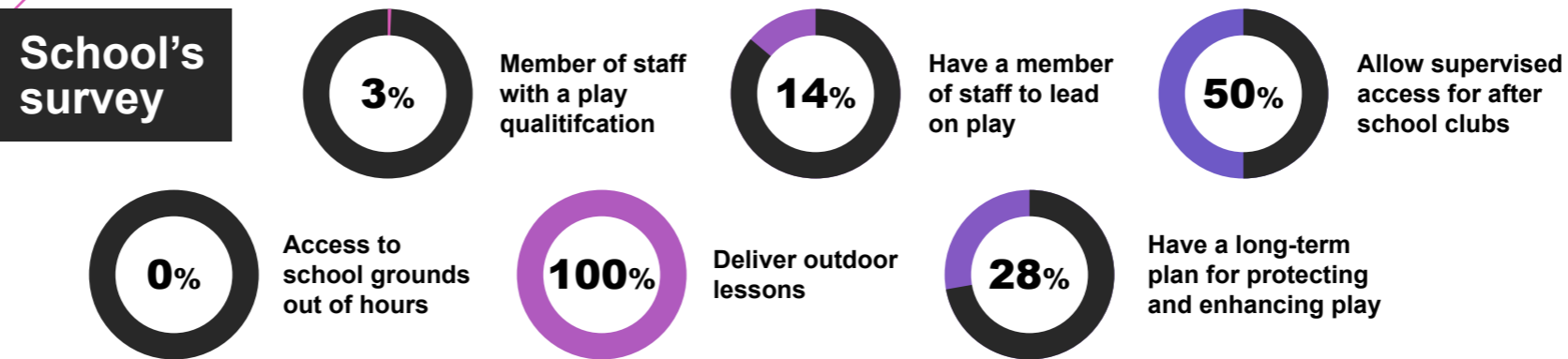
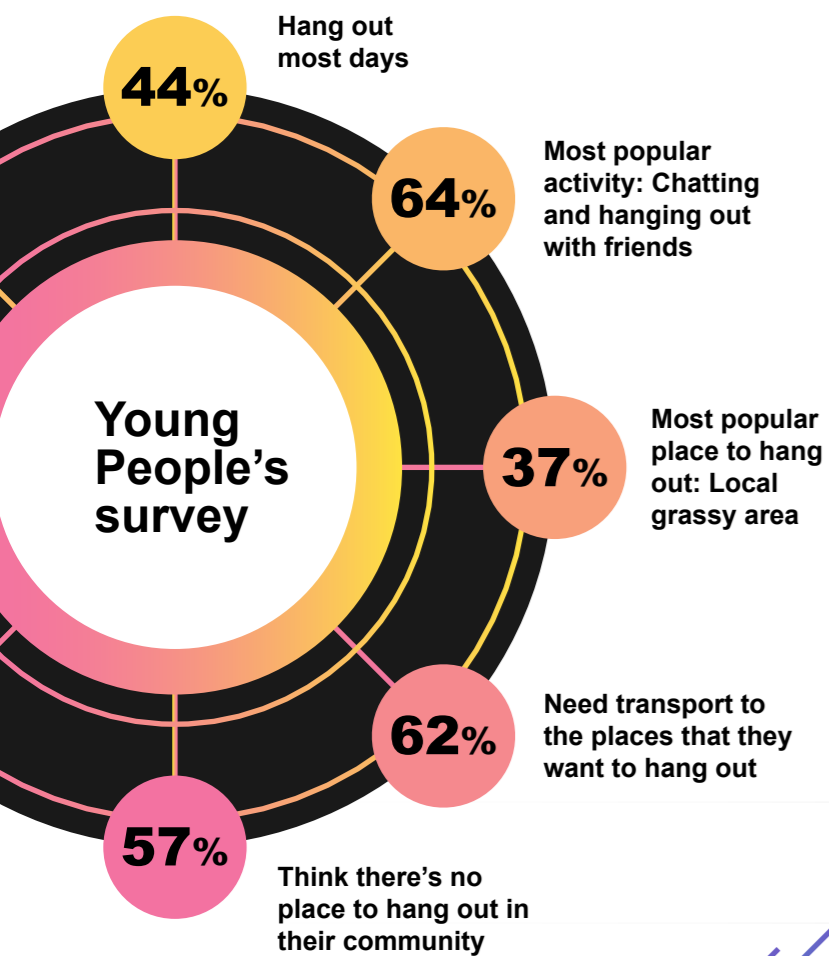


# 1 What is the PSA?

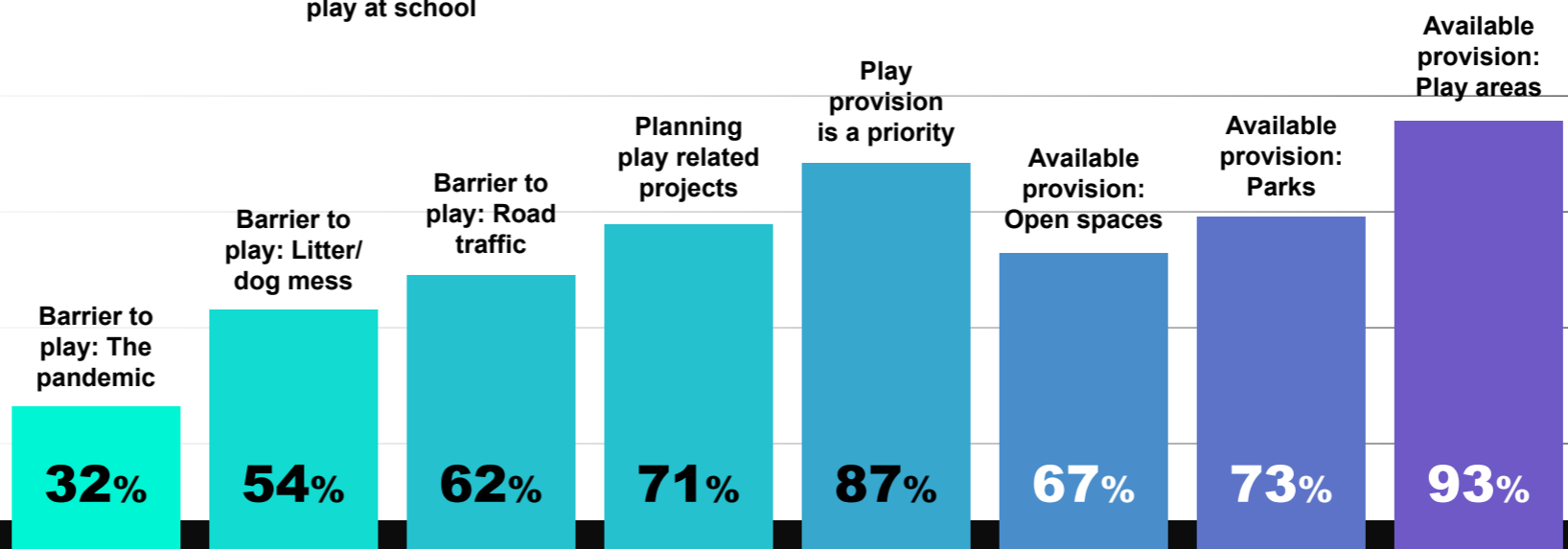
The Welsh Government has an aspiration to create a play friendly Wales, providing excellent opportunities for our children to play. In order for this aspiration to become a reality, collaborative working between Local Authorities and a range of partners and stakeholders is required. The Welsh Government's Children and Families Measure includes a section on "Play Opportunities" which is the basis for the Play Sufficiency Assessment.

# 2 What you told us.

We undertook a programme of surveys, focus groups and meetings to find out what families and Stakeholder's think about play. We found out...



# Town and community council survey



# 3

## Our plan!

Based on our conversations with the community and stakeholders, as well as an analysis of available play provision we will:

- Use data to inform decision making.
- Address play needs in the community.
- Empower local people.
- Find out what play and recreational provision young people want.
- Address gaps in provision for children with disabilities and additional needs.
- Ensure we make the best use of funding.
- Help families to find out what play provision is available for them.
- Train our play workforce.
- Embed the value of play in policies and strategies.